

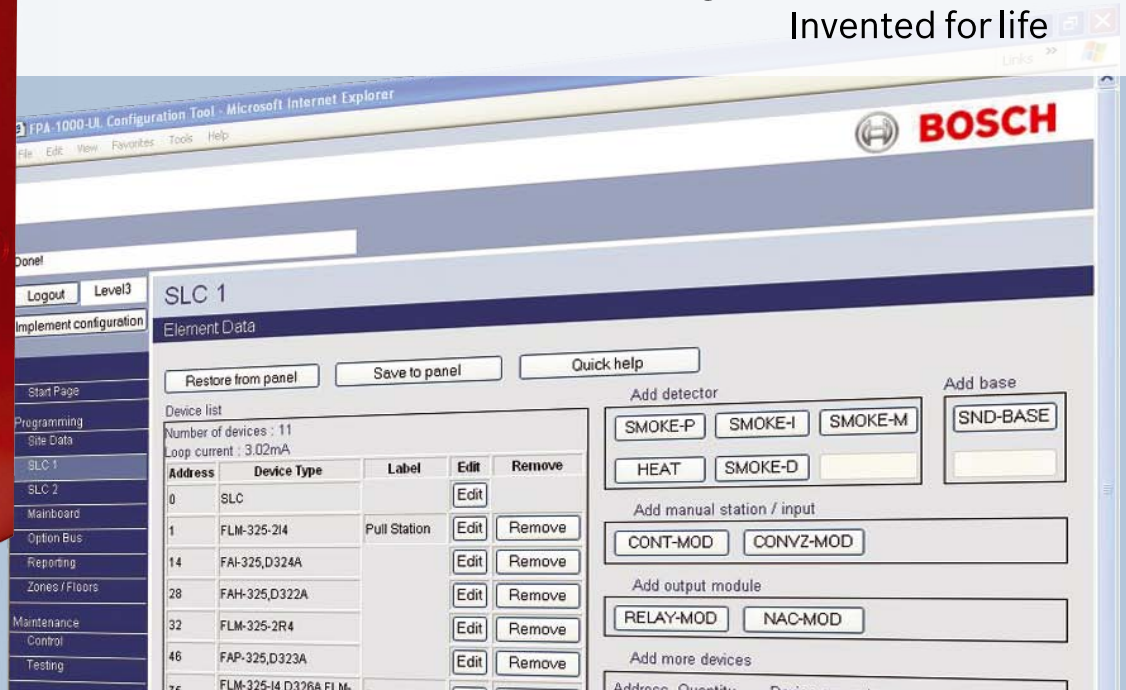
A focused direction in fire protection

FPA-1000 Analog Addressable Fire Alarm Control Panel



BOSCH

Invented for life



The FPA-1000-V2 is a scalable solution for fire detection. Protect your building with a single system or connect multiple panels together as your needs grow. Networking capabilities support the monitoring of up to 2,000 addressable points in one system for campuses or other large commercial environments. All connected panels can easily be programmed and controlled via any panel.

Simple system management

A set of interactive Web pages give you an instant means to access important system functions. This unique feature enables programming and diagnostic capabilities using any browser-enabled device, streamlining installation and reducing the time required for servicing the system. And, you can check status and manage the system from virtually anywhere on the network.

IP-based programming and reporting

With built-in Bosch Conetix IP technology, the FPA-1000 can communicate over its own IP networks for faster alarm reporting and reduced costs.

Compatible with the latest Bosch solutions

A range of detectors, pull stations, modules and accessories are available to meet the needs of your application.

Gas detection

Set your system to monitor for carbon monoxide to meet the NFPA 720 regulation requirements for this hazardous gas. Integrated gas detection is an important element of your facility's fire and life safety strategy.





Suited to a wide range of applications

The FPA-1000-V2 Fire Panel is recommended for a wide range of commercial and public building applications, including:

- ▶ Retail - single-building applications
- ▶ Education – schools and universities
- ▶ Residential - apartment buildings
- ▶ Commercial – manufacturing plants, warehouses and office complexes
- ▶ Government and Public Service – military bases and installations
- ▶ Medical – healthcare facilities

Features	Benefits
Web-based system	Remote management from virtually anywhere on the network
Mixed wiring on one network module with support for Ethernet, fiber optic or two-conductor wire	Allows multiple cable types to be connected in the same network for flexibility in system design
Network module diagnostic LED	Easy to determine the status of the network
Extra-large keypad buttons	Allows first responders to operate the system while wearing protective gloves

Put the power and performance of the FPA-1000-V2 to work for you today.

Learn more at www.boschsecurity.com.